



**SEE
INSTITUTE**

Sustainability through
Research & Education

NET-ZERO VENUE FOR SUSTAINABLE EVENTS



TABLE OF CONTENTS

ABOUT SEE INSTITUTE	03
OUR COMMITMENT	03
OUR COMMITMENT TO A RESILIENT FUTURE	03
HOSTING A SUSTAINABLE EVENT THE SEE INSTITUTE WAY	04
CATERING	04
WASTE MANAGEMENT	04
TRANSPORTATION	05
ENERGY & WATER	05
THE FIRST NET ZERO VENUE IN THE REGION	06
VENUES	07
GROUND FLOOR	08
AUDITORIUM	09
IMMERSIVE EXPERIENCE & VR HALL	10
COLLABORATIVE HYBRID AUDITORIUM	11
CLASSIC HYBRID AUDITORIUM	11
SOCIAL STEPS & RECEPTION AREA	12
VIP MAJLIS	13
FIRST FLOOR	14
CLASSROOMS	15
FOOD & BEVERAGES	16
ACCOMMODATION	17



ABOUT SEE INSTITUTE

SEE Institute is dedicated to **fostering a sustainable future** through conferences and events that bring together experts and leaders to address the challenges of climate action and promote resilience.

We support global and regional ambitions, such as the **Paris Agreement and UN Sustainability Development Goals**, by building the human capital base needed to meet current and future sustainability needs. Our **carbon-neutral building** serves as a model for energy efficiency, and we further this message through **education, research, and conferences**. We work with governments, industry, and academia to drive climate action and **amplify the message of COP28, which will be hosted in the UAE in 2023.**

OUR COMMITMENT

SEE Institute is committed to connecting national and international industry leaders, sustainability pioneers and business front-runners from public and private sector organizations, who contribute valuable knowledge to the global discourse on **sustainability and acceleration of climate action.**

OUR COMMITMENT TO A RESILIENT FUTURE

At SEE Institute, **sustainability is paramount.** We are relentless in our pursuit of **waste reduction**, and we achieve this through innovative recycling and composting programs that minimize the amount of waste that ends up in landfills. Our commitment to **sustainable sourcing** extends to the food we serve, where we source only the finest ingredients from local and sustainably farmed sources, reducing our carbon footprint and supporting the local community. Furthermore, we strive to make **sustainable transportation options** accessible to our guests by providing electric vehicle charging stations and bike racks. Together, we are creating a more sustainable future and sending a bold message about the importance of **environmental preservation.**

JOIN US
IN OUR
QUEST
FOR A
GREENER
TOMORROW



HOSTING A SUSTAINABLE EVENT THE SEE INSTITUTE WAY

At SEE Institute, we provide a **comprehensive event management solution** to support your efforts in the pursuit of climate neutrality to reduce the environmental footprint of your event. Our aim is to help you reach **net zero carbon emissions** and **align with the Paris Agreement** by adhering to verified sustainability standards at every stage of the event planning process. In order to achieve this, our team leverages cutting-edge technology to plan and execute events that not only **minimize greenhouse gas emissions**, but also inspire climate action beyond the event. From local and sustainable catering to innovative green solutions, SEE Institute is your partner in creating a sustainable and memorable experience.



CATERING

Our commitment to sustainability extends to the selection of catering services, where we prioritize **local and sustainable** options. We are proud to have established relationships with a range of sustainable suppliers who offer locally sourced and **consciously farmed** catering options for events, as we understand the importance of sourcing ingredients from sustainable and **ethical sources**.

By carefully considering the environmental impact of catering choices, we strive to **minimize our carbon footprint** and promote a more sustainable future for all.

WASTE MANAGEMENT

We prioritize **waste reduction** programs through our comprehensive waste management system which includes **recycling and composting** programs, aimed at helping minimize the amount of waste sent to landfills.

In addition to this, we offer **compostable or reusable serving plates and utensils** to further emphasize our commitment to establishing a sustainable event atmosphere that promotes waste reduction and environmental protection.

TRANSPORTATION

Moreover, we encourage sustainable modes of transportation for attendees, such as **electric vehicles and cycling**, through the provision of **EV charging stations** and bike racks.

In our continuous effort to promote sustainability, we are constantly exploring new ways to **reduce our impact on the environment**. Hosting a sustainable event at our venue is not only a responsible choice, but it also conveys a strong message about **your commitment to environmental preservation**. Join us in our mission to make a positive impact and host an event that not only captivates your audience but also contributes to a more sustainable and resilient future.

ENERGY & WATER

SEE Institute's utilization of cutting-edge technology such as integrated **solar panels, bifacial solar PV systems, a biogas plant, and wastewater treatment** and utilization strategies alongside the support of a GHG inventory consultancy, marks a revolution in the fight against climate change. It's a bold step towards a cleaner and more sustainable future, where energy is produced efficiently and with **minimal impact on the environment**.





THE FIRST NET ZERO VENUE IN THE REGION

As a responsible organization, SEE Institute took a proactive approach to minimize the environmental impact of our building by implementing various strategies to **reduce embodied and operational carbon emissions.**

We conducted a full **life cycle assessment**, which helped us identify areas where we could reduce emissions. In addition to this, we employed an **optimized structural design** that used fewer materials wherever possible, and locally sourced prefabricated major structural elements such as beams and slabs. Furthermore, we utilized low-emitting concrete, recycled steel, and locally sourced finishes and materials to minimize transportation emissions.

The building is equipped with **bifacial solar panels, an intelligent PV facade, hybrid HVAC system** and many other passive and active designs that make this venue a true inspiration for climate action.

In addition to the above, we performed a detailed comparative analysis of different building systems to ensure we selected the best options for insulation and acoustics.

Overall, our comprehensive approach to reducing embodied carbon demonstrates **our commitment to sustainability and environmental stewardship.**

5,955 sqm

Build Up
Area

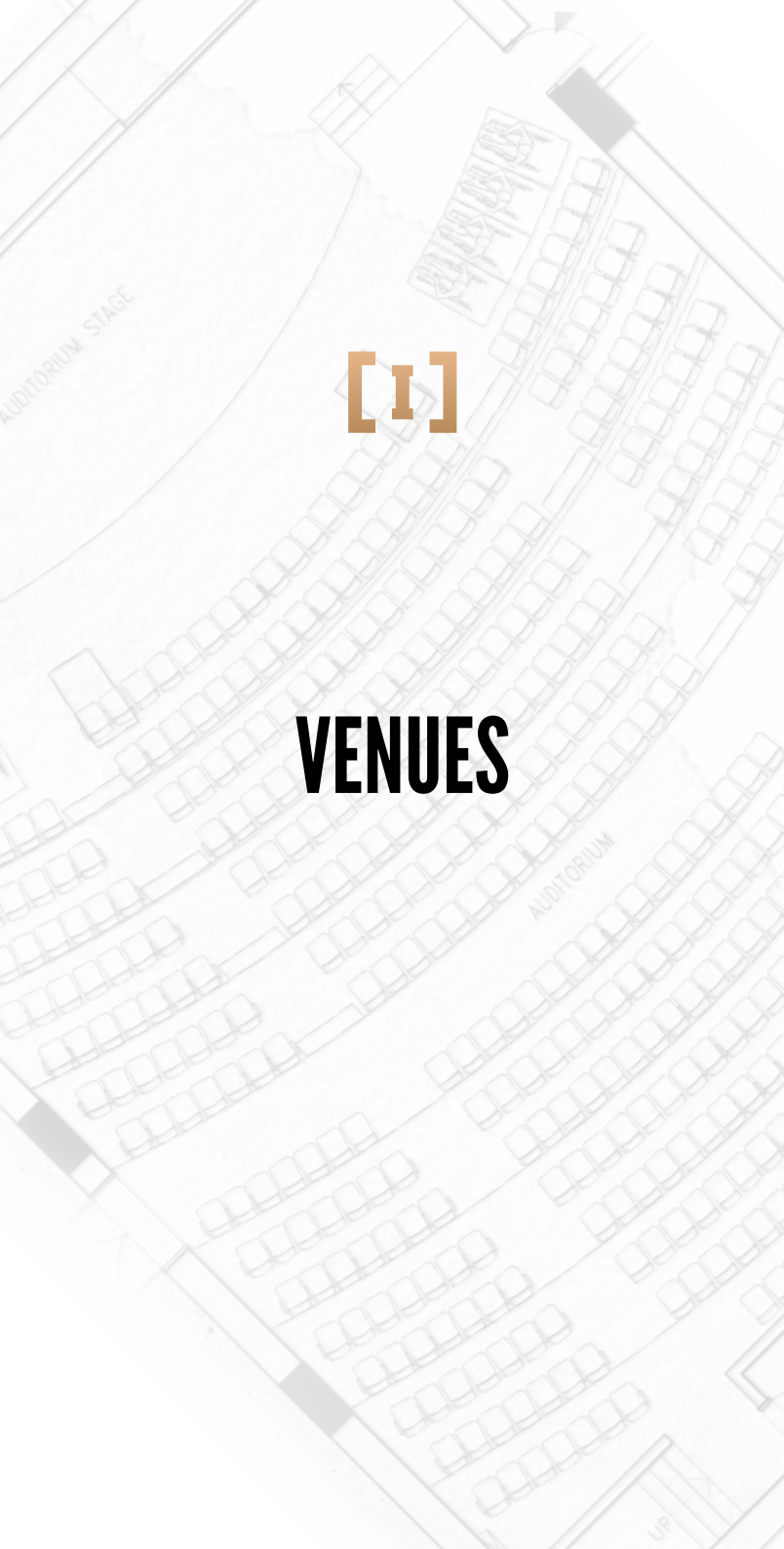
4,515 sqm

Gross Floor
Area

115 kWh/sqm/Yr

Design Energy
Use Intensity





[1]

VENUES

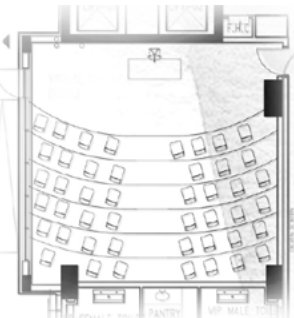


GROUND FLOOR



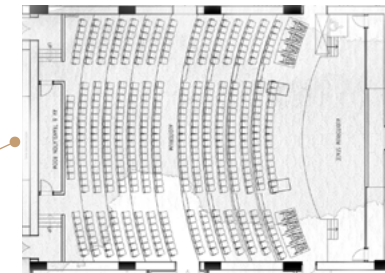
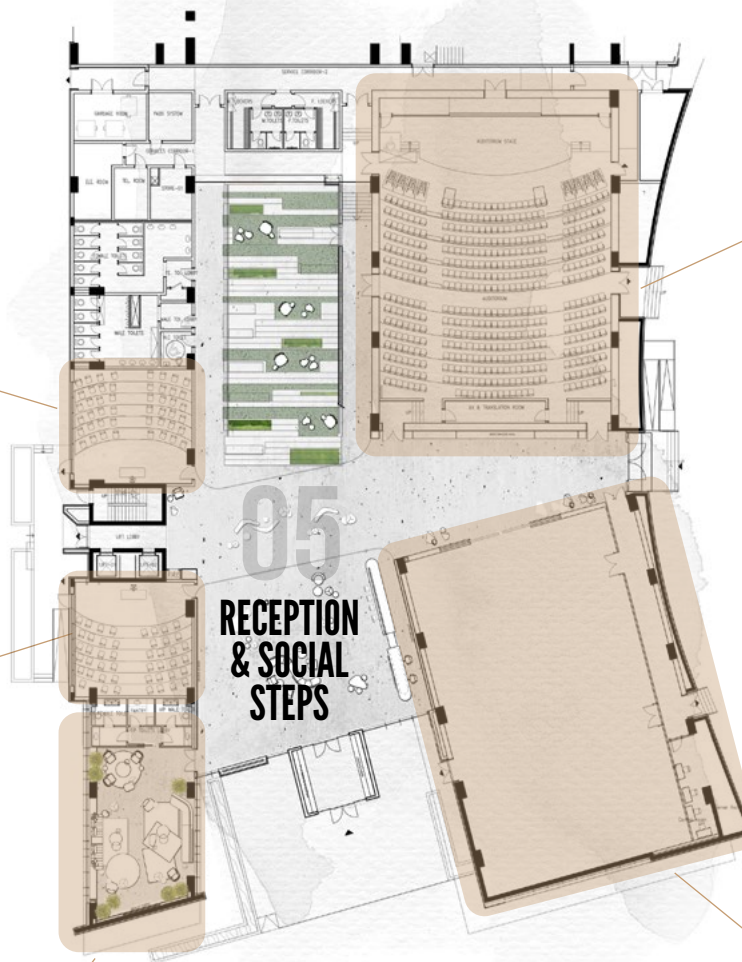
03 COLLABORATIVE HYBRID AUDITORIUM

Size	82 square meters
Max. Capacity	48 seats
Technology	Projectors Handheld & Head Microphones 2 High-Definition Cameras Advanced Sound System VR Metaverse Technology



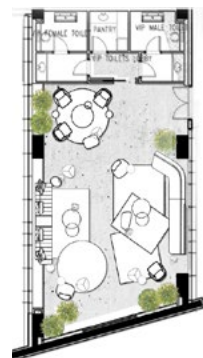
04 CLASSIC HYBRID AUDITORIUM

Size	82 square meters
Max. Capacity	60 seats
Technology	Projectors Handheld & Head Microphones 2 High-Definition Cameras Advanced Sound System VR Headsets



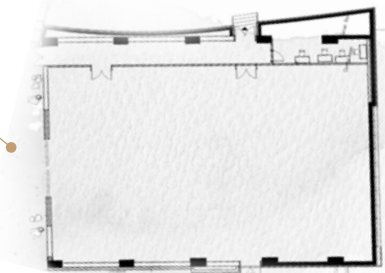
01 AUDITORIUM

Size	467 square meters
Max. Capacity	440 seats
Projection Area	92 m2
Technology	Projectors 3 Handheld & 3 Clip on Microphones High Definition Camera 24 Translation Headsets Controlled Lights Translator Room with 2 Fixed Microphones



06 VIP MAJLIS

Size	105 square meters
Max. Capacity	15 seats
Technology	TV and DU Satellite TV Advanced Sound System



02 IMMERSIVE EXPERIENCE HALL

Size	527 square meters
Max. Capacity	300 - 400 seats
Projection Area	443 square meters
Technology	32 VR Headsets Digital Screen in Reception

01

AUDITORIUM

Designed to accommodate up to 440 attendees. Fully equipped with audio-visual features.

Size	467 square meters
Max. Capacity	440 seats
Projection Area	92 m ²
Technology	<ul style="list-style-type: none"> Projectors 3 Handheld & 3 Clip on Microphones High Definition Camera 24 Translation Headsets Controlled Lights Translator Room with 2 Fixed Microphones



02

IMMERSIVE EXPERIENCE & VR HALL



VERSATILE & ENDLESS OPPORTUNITIES

Step into a world of endless possibilities with 500 square meters of versatile and adaptable space. The integration of cutting-edge **augmented reality (AR) and virtual reality (VR) technology** elevates the atmosphere, providing limitless opportunities to showcase imaginative and engaging content in the form of interactive displays, **virtual demonstrations, and immersive experiences.**

CUTTING-EDGE TECHNOLOGY

Our technology has been carefully designed to offer seamless integration into the event, **fostering a captivating and memorable experience** for all attendees. Additionally, our state-of-the-art AR & VR technology is highly intuitive, allowing you to effortlessly bring your event to life while ensuring a seamless experience for your guests.

INTUITIVE TEAM

With a **team of dedicated professionals** committed to bringing your vision to life, every aspect of your event will be executed with precision and care. From the initial planning stages to the final execution, you can rely on the venue's team to ensure that your event is a triumph. Whether you aim to host a large corporate conference, a product launch, an intimate celebration, or an edutainment show, the venue's advanced technology provides the perfect setting to **make your next event truly unique.**



Size	527 square meters
Max. Capacity	300 - 400 seats
Projection Area	443 square meters
Technology	32 VR Headsets Digital Screen in Reception



COLLABORATIVE HYBRID AUDITORIUM



CLASSIC HYBRID AUDITORIUM

Both of our hybrid auditoriums boast **cutting-edge technology** alongside stunning features and present a great opportunity to host your event. With a capacity of up to 60 participants, both are equipped with projectors, handheld and headset microphones for clear audio, and two high-definition cameras to allow for the seamless integration of **both online and face-to-face delivery**. The advanced sound system and availability of VR headsets elevates the experience, offering an **immersive and interactive venue** perfect for corporate presentations, training sessions, or multimedia demonstrations. Experience the future of auditoriums in our one-of-a-kind spaces.

COLLABORATIVE HYBRID AUDITORIUM

Size	82 square meters
Max. Capacity	48 seats
Technology	Projectors Handheld & Head Microphones 2 High-Definition Cameras Advanced Sound System VR Metaverse Technology

CLASSIC HYBRID AUDITORIUM

Size	82 square meters
Max. Capacity	60 seats
Technology	Projectors Handheld & Head Microphones 2 High-Definition Cameras Advanced Sound System VR Headsets



**SOCIAL STEPS
& RECEPTION AREA**



00

VIP MAJLIS

Size	105 square meters
Max. Capacity	15 seats
Technology	TV and DU Satellite TV Advanced Sound System

CLASSROOM 01

Size 82 square meters

Max. Capacity 24 seats

Technology
Projector
Advanced Sound System
VR Metaverse Technology

CLASSROOM 02

Size 82 square meters

Max. Capacity 24 seats

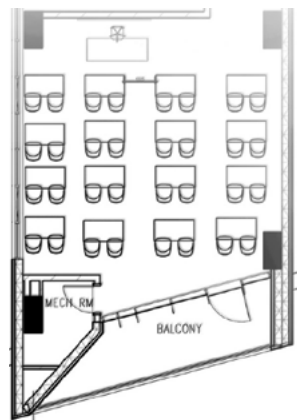
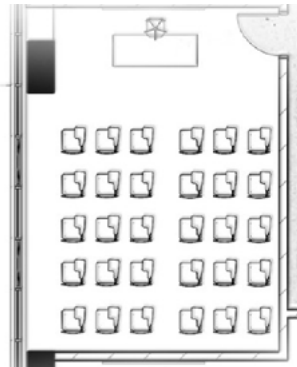
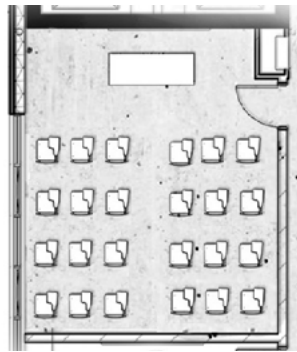
Technology
Projector
Advanced Sound System
VR Metaverse Technology

HYBRID CLASSROOM

Size 82 square meters

Max. Capacity 42 seats

Technology
Projector
1 Handheld & 1 Head Microphones
2 High Definition Cameras
Advanced Sound System
VR Metaverse Technology



FIRST FLOOR



07

CLASSROOMS

Our **3 hybrid classrooms** allow for dynamic, flexible, and personalized education by combining **traditional in-person instruction and online learning** which ensures a truly immersive experience for students. Join the revolution in education, and embrace the future with a hybrid classroom.

CLASSROOMS

Size	82 square meters
Max. Capacity	24 seats
Technology	Projector Advanced Sound System VR Metaverse Technology

HYBRID CLASSROOM

Size	82 square meters
Max. Capacity	42 seats
Technology	Projector 1 Handheld & 1 Head Microphones 2 High Definition Cameras Advanced Sound System VR Metaverse Technology



08

FOOD & BEVERAGES



00

ACCOMMODATION

The Sustainable Homes (TSH) offers short-term, sustainable accommodation in Dubai, with studio-apartments featuring smart technology to monitor water, energy and the total carbon footprint. Guests also have access to amenities such as courtyards, a recreational rooftop, F&B outlets, a co-working space, playgrounds, an animal sanctuary and sports facilities, all within walking distance or reachable by rental bike. Experience sustainable living while exploring Dubai in TSH.



S E E
SOCIAL
ENVIRONMENTAL
ECONOMIC
INSTITUTE

CONTACT US

+971 56 355 9747
connect@seeinstitute.ae

The Sustainable City
PO Box 251153
Dubai, UAE